

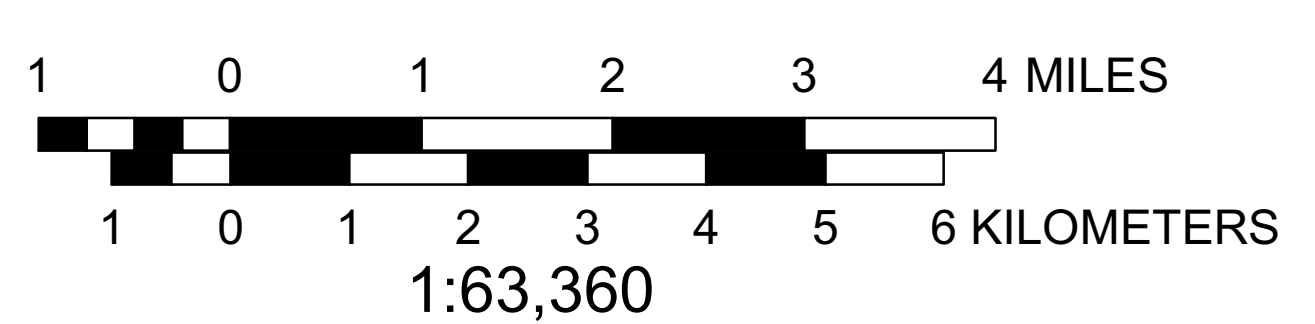
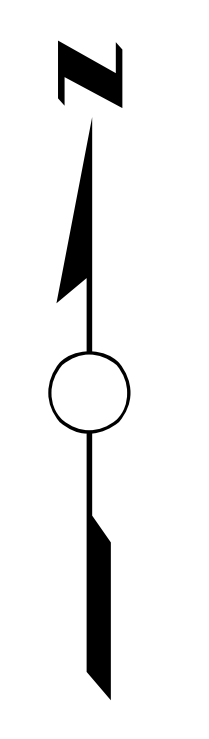
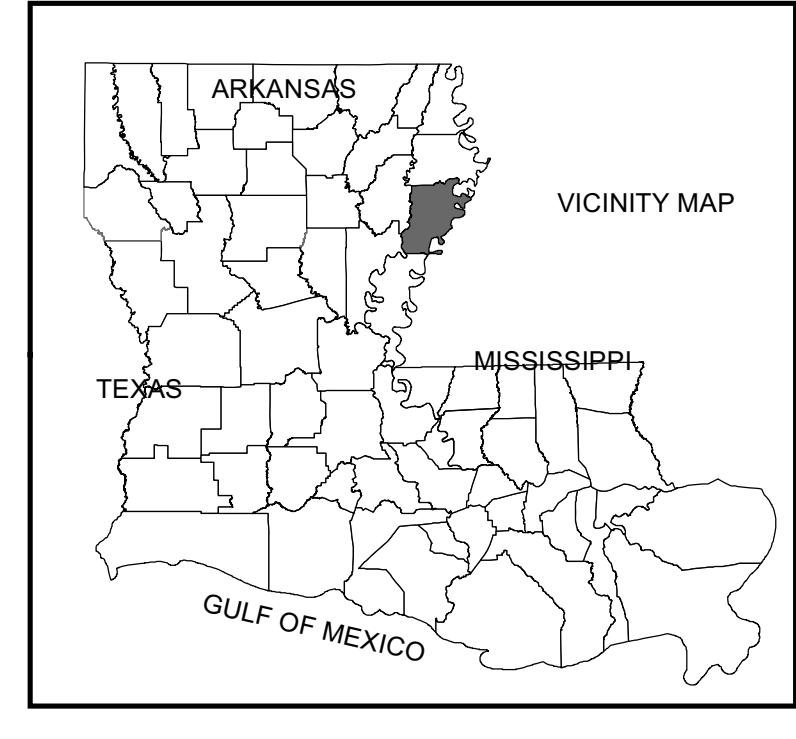
**ALL State Highways shown as "Proposed for Transfer to Local Government Roadway System" are being re-evaluated and ALL Right-Size maps are being revised. Please contact the DOTD District for any inquiries concerning the Road Transfer Program.**

- Existing State Highway System to Remain
- State Highways Proposed for Transfer to Local Government Roadway System
- State Highways Transferred to Local Government Roadway System
- State Highways to be Transferred Under Existing Agreements with Local Government
- Local Roads with Existing Agreements for Transfer to State Highway System
- Proposed State Highway Construction with Existing Agreements
- Local Roads Proposed for Transfer to State Highway System
- Proposed State Highway Construction
- Local Government Roadway System
- State System Ferries
- Bridges Proposed for Transfer
- Movable Bridges Proposed for Transfer
- Water Bodies
- City Limits
- Urbanized Areas
- Urban Areas

**RIGHT-SIZING THE STATE HIGHWAY SYSTEM**  
**TENSAS PARISH**

LOUISIANA  
 MAP UPDATED MARCH 2017  
 POPULATION FROM 2010 CENSUS  
 PREPARED BY THE  
 DEPARTMENT OF TRANSPORTATION AND DEVELOPMENT  
 OFFICE OF MULTIMODAL PLANNING  
 IN COOPERATION WITH THE  
 U.S. DEPARTMENT OF TRANSPORTATION  
 FEDERAL HIGHWAY ADMINISTRATION

INFORMATION PORTRAYED ON THIS MAP REFLECTS THE STATE HIGHWAY SYSTEM AS OF MARCH 2, 2017



THIS MAP HAS BEEN PREPARED BY THE LOUISIANA DEPARTMENT OF TRANSPORTATION AND DEVELOPMENT, OFFICE OF MULTIMODAL PLANNING AND DEVELOPMENT. COOPERATION WITH THE U.S. DEPARTMENT OF TRANSPORTATION FEDERAL HIGHWAY ADMINISTRATION. PRINTED COPIES OF THIS MAP ARE AVAILABLE FOR PUBLIC USE AT A NOMINAL COST. PLEASE SEE THE FOLLOWING CONTACT INFORMATION: DEPARTMENT OF TRANSPORTATION AND DEVELOPMENT, GENERAL P.L.S. - MAP SALES, P.O. BOX 9450, BATON ROUGE, LA 70809-0450, (225) 739-1707. DATA ON THIS MAP IS INTENDED FOR INTERNAL PLANNING USE ONLY. ACCURACY OF THE DATA IS NOT GUARANTEED. THE FACTOR OF DISTORTION IS NOT GUARANTEED. THE FACTOR OF DISTORTION IS NOT GUARANTEED. THE FACTOR OF DISTORTION IS NOT GUARANTEED. THE FACTOR OF DISTORTION IS NOT GUARANTEED. PROJECTION: NAD 83 UTM Zone 18N. Batoune, Missouri. File Name: 0000000000. Date: 03/02/2017. Scale: 1:63,360. Units: Feet. Datum: NAD 83. Contour Interval: 10.000000. Horizontal Datum: NORTH AMERICAN DATUM OF 1983.